

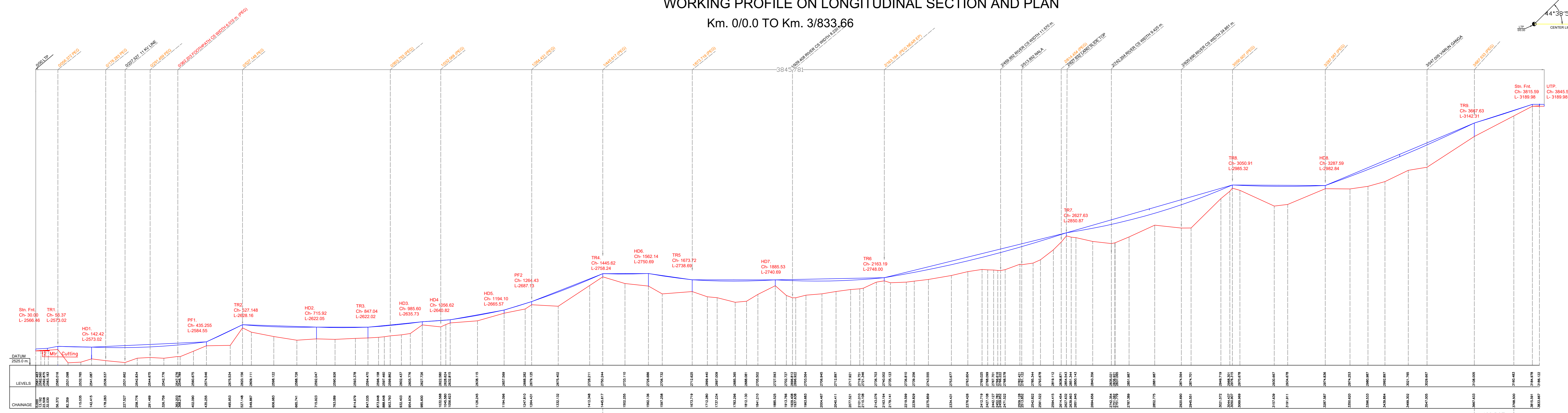
RFQ-cum-RFP for development of Aerial Passenger Ropeway from Kharsali (Uttarkashi) to Yamunotri Temple, Uttarakhand, India on DBFOT basis through PPP

Longitudinal Section and Plan is attached.

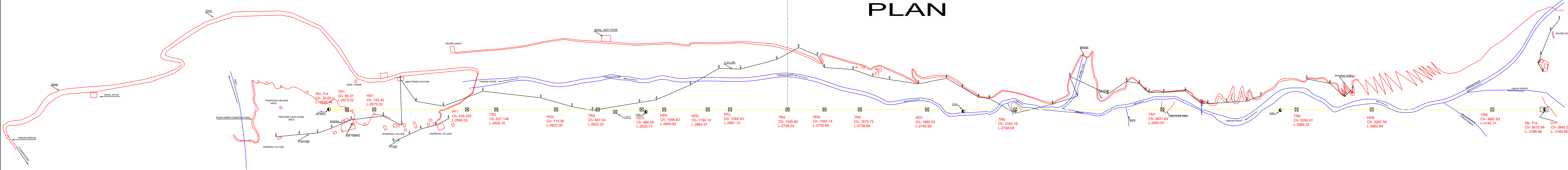
PROPOSED PASSENGER ROPEWAY BETWEEN KHARSALI VILLAGE AND YAMUNOTRI

WORKING PROFILE ON LONGITUDINAL SECTION AND PLAN

Km. 0/0.0 TO Km. 3/833.66



PLAN



Rev. "B" - REVISED TOWER LOCATIONS
 Rev. "C" - INDICATING PEG LOCATIONS

LEGEND	
RW. CENTRE LINE	
ROAD/PATH	
NALA/RIVER	
HUT/BUILDING	
ELECTRIC LINE/EP	
TREE	
CS	
CROSSING WIDTH	

PROJECT:	PROPOSED PASSENGER ROPEWAY BETWEEN KHARSALI VILLAGE AND YAMUNOTRI TEMPLE AT KHARSALI VILLAGE, UTTARKANSHI (U.A)	
Drawn By :		Date : MAY, 2007
TITLE :	WORKING PROFILE	
Drg. No.	RITES/RW&IE/YAMUNOTRI/002 Rev. C	
Consultant :	 RITES LTD. (A Government of India Enterprise)	
Client :	UTTARANCHAL INFRASTRUCTURE PROJECTS COMPANY PRIVATE LIMITED	
SCALE :	HOR. 60 30 0 30 60 M VER. 60 30 0 30 60 M	